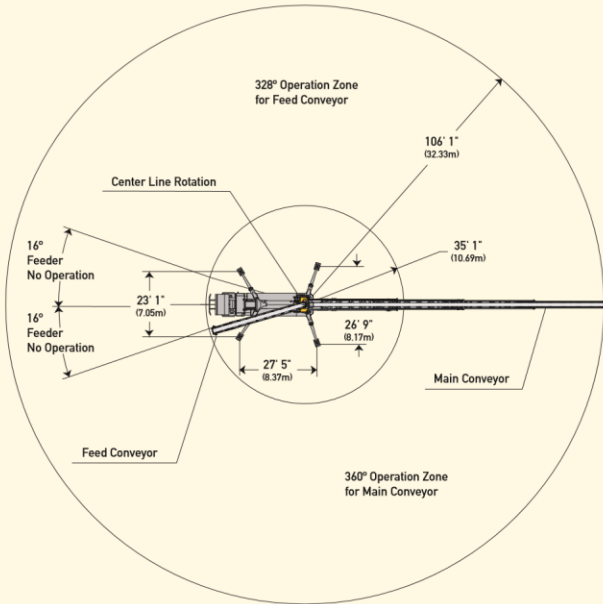
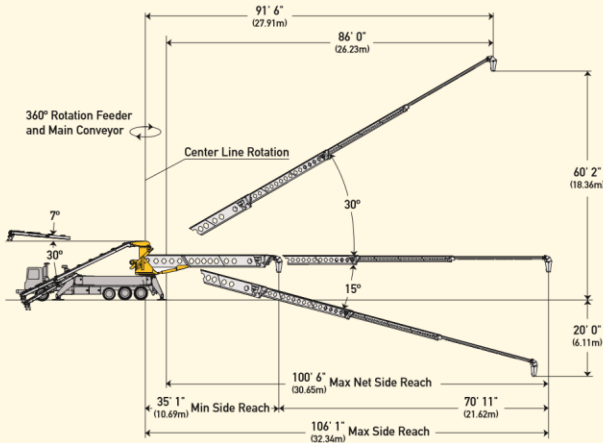
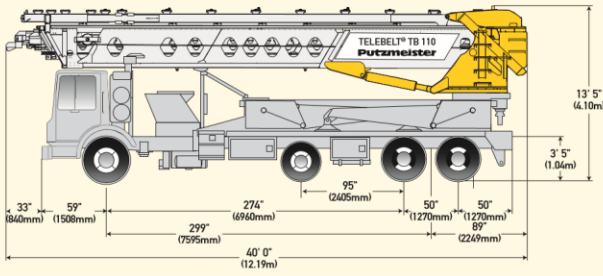


Telebelt® TB 110 Specifications



Conveyors

Conveyor horizontal reach		
Maximum at 0°	106' 1"	(32.34m)
Maximum at 30°	91' 6"	(27.91m)
Conveyor belt width		
	18"	(457mm)
Feed conveyor length		
	38' 0"	(11.60m)
Feed conveyor belt width		
	18"	(457mm)
Trunk/end hose length		
	15' 0"	(4.57m)
Discharge height from grade		
Maximum at 30°	60' 2"	(18.36m)
Maximum at -15°	-20' 0"	(-6.11m)
Main & feed conveyors		
Observed capacity at 0°	5.00 yd ³ /min	(4.00m ³ /min)
Observed capacity at 20°	5.00 yd ³ /min	(4.00m ³ /min)

Outriggers

Net reach beyond outriggers —		
at 0°	100' 6"	(30.65m)
at 30°	86' 0"	(26.23m)
Outrigger spread L-R — front manual out, hydraulic extended down		
	23' 1"	(7.05m)
Outrigger spread L-R — rear manual out, hydraulic extended down		
	26' 9"	(8.17m)
Outrigger spread front to rear		
	27' 5"	(8.37m)

General Specifications

Water tank capacity	200 gal	(757 L)
Hydraulic oil tank capacity (with cooler)	150 gal	(568L)

Truck Specifications *•+

Weight	20,525 lbs	(9,310kg)
Engine horsepower	405 hp	(302kW)
Wheelbase	299"	(7,595mm)
Cab height	104"	(2,642mm)
Steering radius (outside)	45' 6"	(13.87m)
Steering angle	30°	
Fuel tank capacity	80 gal	(303L)
Transmission	Mack T310 10-Speed	

Transport Axle Weights *•+

Steering	19,008 lbs	(8,621kg)
Pusher	10,000 lbs	(4,535kg)
Tandem	33,754 lbs	(15,309kg)
Total	62,762 lbs	(28,465kg)

Maximum theoretical values listed.

* Truck dimensions will vary with different truck makes, models and specifications.

• Weights are approximate and include truck, fuel, and 100 gal (379L) of water.

+ All specifications apply to units mounted on Mack MRU 613.



Putzmeister America, Inc.
1733 90th Street
Sturtevant, WI 53177 USA

Phone (262) 886-3200
Toll-free (800) 884-7210
Fax (262) 884-6338